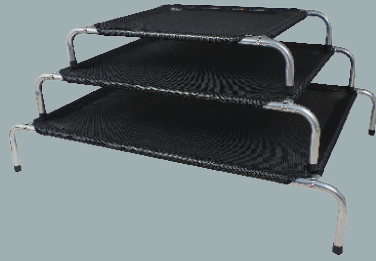
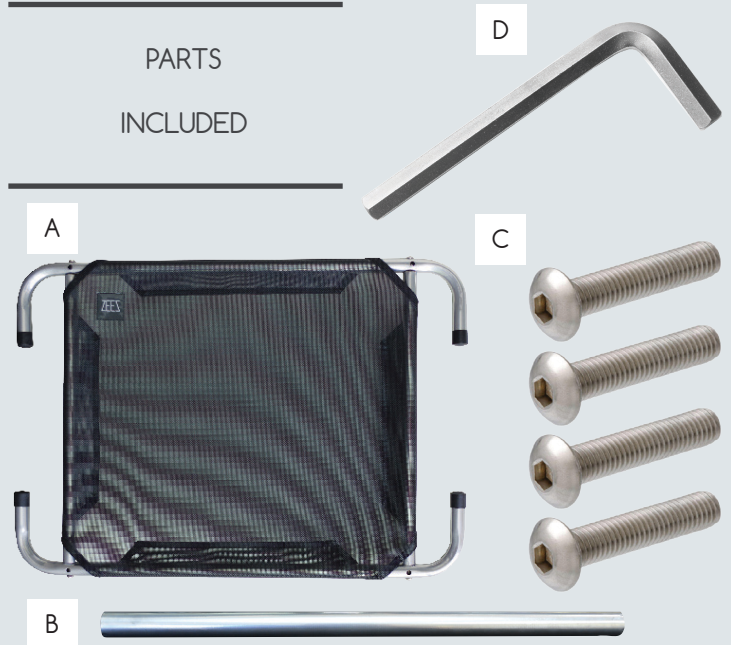


# ZEEZ

## ELEVATED PET BEDS SHIRAZ & BLACK ASSEMBLY INSTRUCTIONS



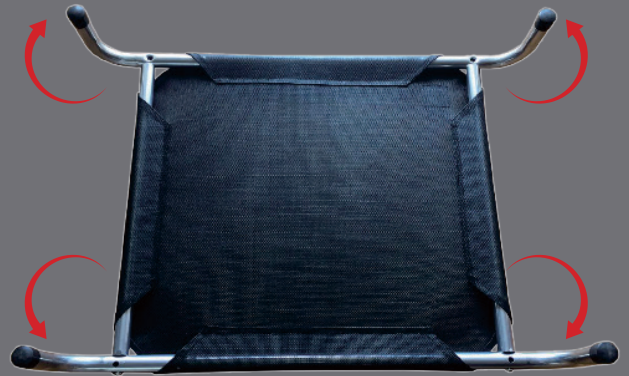
### PARTS INCLUDED



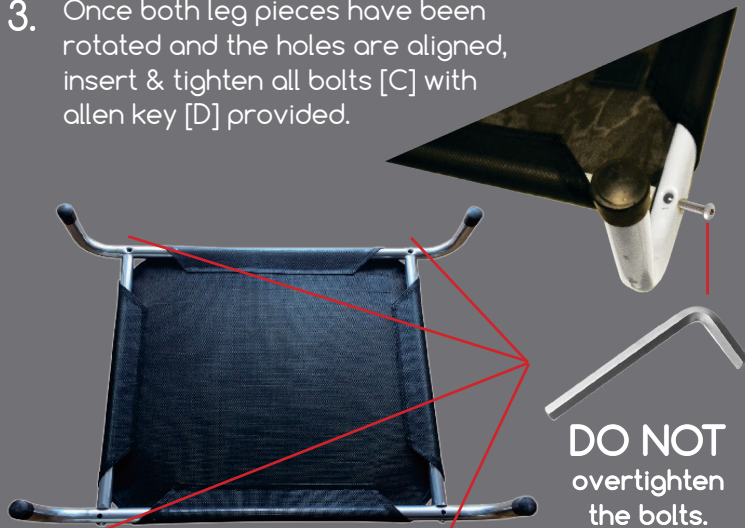
1. Place [A] on the ground, top facing down. Insert the side frame pieces [B] and line up with the pre-drilled holes.



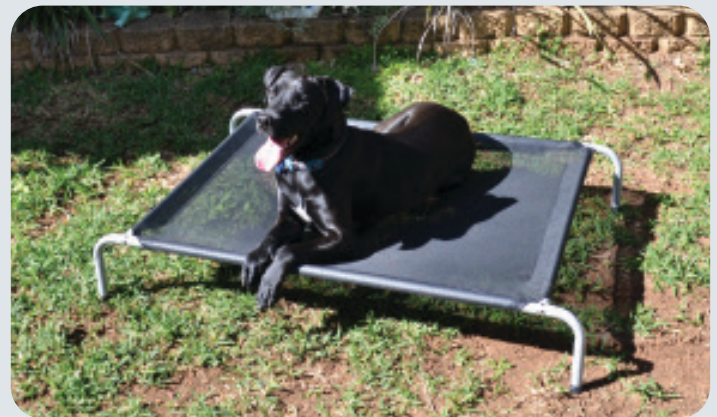
2. Rotate both leg sections [A] upwards (90 degrees) so the holes line up with the main frame.



3. Once both leg pieces have been rotated and the holes are aligned, insert & tighten all bolts [C] with allen key [D] provided.



4. Once bolts are inserted and tightened, flip the bed the right way up and your dog is ready to rest!



### Extra Information

- Once in position, ensure all bolts are tightened.
- DO NOT over-tighten the bolts.
- Check bolts periodically and re-tighten as needed.
- Due to being manufactured with a snug fitting floor, you may require assistance in initial assembly.
- ZeeZ Elevated Pet Beds are designed for rest and sleep only.



# ZEEZ

DISTRIBUTED BY  
[www.prestigepetproducts.com.au](http://www.prestigepetproducts.com.au)