

# ULTIMATE COMPETITION Blades



- Wahl's Ultimate Competition Series blade sets provide 2.5 times faster show quality cutting than the original Wahl Competition Series blade sets. Ultimate Competition Series blade sets are designed for smooth feeding that leaves no clipper tracks. They are made with hardened steel for durable and long lasting blades that stay sharp.



#3F Full Extra Coarse  
10mm

02376-516



#4 Skip Extra Coarse  
8mm

02374-516



#4F Full Extra Coarse  
8mm

02375-516



#5 Skip Coarse  
6mm

02371-516



#5F Full Coarse  
6mm

02372-516



#7 Skip Medium Coarse  
3.8mm

02367-516



#7F Full Medium Coarse  
4mm

02368-516



#8.5 Medium  
3mm

02362-516



#9 Medium  
2mm

02360-516



#10 Medium  
1.8mm

02358-516



#10W Extra Wide  
1.8mm

02377-516



#15 Medium Fine  
1.5mm

02357-516



#30 Fine  
0.8mm

02355-516



#40 Surgical  
0.6mm

02352-516



#50 Ultra Surgical  
0.4mm

02350-516

# COAT TYPES

## Curly / Wavy / Fleece coat

**BEDLINGTON TERRIER**



	Blade	SS Comb
Body	5 & 5F, 7 on shoulder	1 on shoulder, 2 on sides, 5 on topline
Head, Ears & Tail	10, 15 or 30	
Stomach	10	
Pads	15 or 30	



**BICHON FRISE**



	Blade	SS Comb
Plush cut	30 & 1" SC	4 or 5
Short cut	4 & 4F	3 or 4
Stomach	10	
Pads	15 or 30	



**BOUVIER DES FLANDRES**



	Blade	SS Comb
Body	30 & 1" SC	6 or 7
Legs, underbody & face	Scissors	Skim with 7 or 8
Matted strip	7 F, 5F or 4F	
Cheeks & throat	Cheeks Natural, 4F on throat	
Ears	10 or 15	
Stomach	10	
Pads	15 or 30	



**KERRY BLUE TERRIER**



	Blade	SS Comb
Short cut	4 & 4F	3 or 4
Body, sides, back & tail	30 & 1" SC	3, 4 or 5
Neck & ears	10 or 15	
Head	8.5	1
Stomach	10	
Pads	15 or 30	



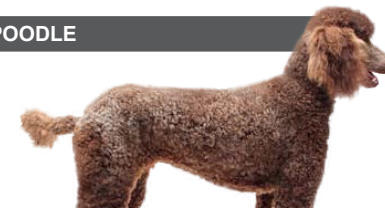
**POODLE**



	Blade	SS Comb
Kennel Trim		
Face, feet & base of tail	10 or 15 or 30	
Body & legs	7F, 5F or 4F	2, 3 or 4
Top knot & tail piece	Scissor	
Stomach	10	



**POODLE**

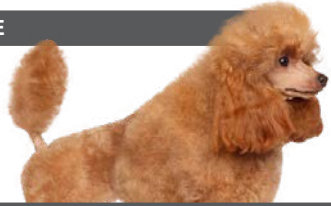


	Blade	SS Comb
Lamb Trim		
Face, feet & base of tail	10 or 15 or 30	
Body	5F or 4F	3 or 4
Legs	Scissor	8
Top knot & tail piece	Scissor	
Stomach	10	





**POODLE**



Summer Trim	Blade	SS Comb
Face, feet & base of tail	10 or 15 or 30	
Body & legs	7F or 5F	1 or 2
Pompoms, top knot & tail pom	Scissor	
Stomach	10	



**POODLE**



Dutch Trim	Blade	SS Comb
Face, feet & tail	10 or 15 or 30	
Body pattern	10 or 15	
Body	30 & 1" SC	
Top knot, tail piece & body finish	Scissor	
Stomach	10	



**PORTUGUESE WATER DOG**



	Blade	SS Comb
Body	30 & 1" SC	4 or 5
Short cut	4 & 4F	3 or 4
Matted strip	7F or 5F	
Head & tail	Tail = 7F, 3/4 length scissor, Head = Skim with A or 0	
Stomach	10	
Pads	15 or 30	



**SOFT COATED WHEATON TERRIER**



	Blade	SS Comb
Body	30 & 1" SC	5 or 6
Short cut	4 & 4F	4 or 5
Head & tail	Scissors	same as body on topside, skim with 7 or 8
Legs & underbody	Scissors	
Ears	7F or 9	
Stomach	10	
Pads	15 or 30	



**YORKSHIRE TERRIER**



	Blade	SS Comb
Puppy cut	30 & 1" SC	5 or 6
Short cut	4, 4F or 7F	3 or 4
Matted strip	7F or 5F	Skim with 5 or 6
Face & head	Scissors	
Ears	10 or 15	
Stomach	10	
Pads	15 or 30	



# COAT TYPES

## Wire coat

### AIREDALE TERRIER



	Blade	SS Comb
Body	7, 5 or 4	2
Head & Neck	9 or 7F	1
Ears	10 or 15	
Tail	5 or 4	1
Stomach	10	
Pads	15 or 30	



### CAIRN TERRIER



	Blade	SS Comb
Long cut	30 & 3/4" SC	5 or 6
Short cut	4	2, 3 or 4
Head & Tail	Scissors	
Matted strip	5	
Ears & Stomach	10 (15 on ear tips)	
Pads	15 or 30	



### DANDIE DINMONT TERRIER



	Blade	SS Comb
Body, sides & back	4	2 or 3
Head, tail & feet	Scissors	
Legs & underbody	Scissors	Skim with 5 or 6
Tops of ears	10 or 15	
Stomach	10	
Pads	15 or 30	



### IRISH TERRIER & FOX TERRIER



	Blade	SS Comb
Body, sides, back & tail	5 or 7F	1 or 2
Head, neck & ears	Head = 7F, Neck = 10 or 9	
Stomach		
Pads	10 15 or 30	



### LAKELAND TERRIER



	Blade	SS Comb
Body, sides & back	7F or 5F or 4	5 or 4
Head	8.5 or 7F	
Neck & ears	10 or 9 or 7F	
Tail	4 or 5	
Stomach	10	
Pads	15 or 30	





### SCHNAUZER



	Blade	SS Comb
Body, back & sides	9 or 7F or 5	
Legs & underbody	Scissors	Skim with 5 or 6
Head, ears & cheeks	10, Head & Neck = 7F, Ears = 15	
Matted strip	7F & 5F	
Stomach	10	
Pads	15 or 30	



### SCOTTISH TERRIER



	Blade	SS Comb
Body, back & side of face	5 or 4, Face = 7F	2 or 3
Ears & neck	10 or 15, Neck = 7F	
Head	8.5 or 7F	
Tail	Scissors	Same as body
Stomach	10	
Pads	15 or 30	



### SEALYHAM



	Blade	SS Comb
Body, back & side of face	5, 4 or 7	2
Ears & neck	10	
Head	8.5 or 7F	
Tail	5, same as body	
Stomach	10	
Pads	15 or 30	



### WELSH TERRIER



	Blade	SS Comb
Body, back, sides & tail	4, 5 or 7F	2SC
Head, ears & neck	7F or 10	
Stomach	10	
Pads	15 or 30	



### WEST HIGHLAND TERRIER



	Blade	SS Comb
Body, back & sides	4 or 5, very short = 7F	
Head, tail & underbody	Scissors	
Ear tips	10, 15 or 30	
Stomach	10	
Pads	15 or 30	



# COAT TYPES

## Long coat

### AFGHAN HOUND



	Blade	SS Comb
Matted Strip	7F	
Stomach	10	Puppy cut look = 6, 7 or 8
Pads	15 or 30	



### BRIARD



	Blade	SS Comb
Puppy cut	1" SC	6, 7 or 8
Legs, underbody & face	Scissors or 30 & 11/2" SC	Skim with 7 or 8
Matted strip	7.5 or 4	
Stomach	10	
Pads	15 or 30	



### BEARDED COLLIE



	Blade	SS Comb
Puppy cut	30 & 11/4" SC	6, 7 or 8
Matted strip	7F or 5F	
Stomach	10	
Pads	15 or 30	



### LHASA APSO & MALTESE



	Blade	SS Comb
Puppy cut	30 & 1" SC	1 or 2
Short cut	5 & 5F or 4 & 4F	
Matted strip	7F or 5F	
Top of head	4F or 5F	
Face & tail	Scissors	
Stomach	10	





### OLD ENGLISH SHEEPDOG



	Blade	SS Comb
Puppy cut	30 & 11/4" SC	6, 7, 8 or 5
Short cut	4F	3 or 4
Head & face	Scissors	4 or 5
Matted strip	7F or 5F	
Stomach	10	
Pads	15 or 30	



### SHIH TZU



	Blade	SS Comb
Puppy cut	30 & 1" SC	3, 4 or 5
Short cut	4 & 4F	2, 3 or 4
Head, tail & ears	Scissors	Skim head with 5 or 6, style dependant
Matted strip	7F or 5F or 4	
Stomach	10	
Pads	15 or 30	



### SILKY TERRIER



	Blade	SS Comb
Puppy cut	30 & 3/4" SC	2, 3 or 4
Short cut	4 & 4F	
Head & underbody	Scissors	
Ears	30	
Matted strip	7F or 5F	
Stomach	10	
Pads	15 or 30	

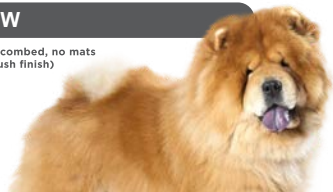


# COAT TYPES

## Heavy coat

### CHOW CHOW

(must be completely combed, no mats or undercoat for a plush finish)



	Blade	SS Comb
Body	7	Puppy cut look = 6, 7 or 8, Shave = 8
Stomach	10	Skim with 7 or 8
Pads	15 or 30	



### GREAT PYRENEES



	Blade	SS Comb
Matted strip	7 or 5	
Stomach	10	
Pads	15 or 30	



### KEESHOND



	Blade	SS Comb
Body	7F or 5F or 4	Shorter all over = 5 or 6
Stomach	10	
Pads	15 or 30	



### NEWFOUNDLAND



	Blade	SS Comb
Matted strip	7 or 5	
Stomach	10	
Pads	15 or 30	







**PEKINGESE**



	Blade	SS Comb
Short cut	7F, 5 & 5F or 4 & 4F	2, 3 or 4
Stomach	10	



**SAMOYED**



	Blade	SS Comb
Matted strip	7F or 5F	
Tail	Scissor	
Stomach	10	
Pads	15 or 30	



**SHETLAND SHEEPDOG**



	Blade	SS Comb
Matted strip	7F or 5F	
Tail	Scissor	
Stomach	10	
Pads	15 or 30	



# COAT TYPES

## Silky coat



### COCKER SPANIEL



	Blade	SS Comb
Body	7 & 7F or 5 & 5F	2 or 1
Face, ears, throat & head	10, 15 or 7F	
Stomach	10	
Pads	15 or 30	



### ENGLISH COCKER SPANIEL



	Blade	SS Comb
Body, sides & back	7 or 7F	1
Front of forelegs	7 or 7F	1
Head, neck, ears & face	10, 15 or 7F	
Stomach	10	
Pads	15 or 30	



### ENGLISH SETTER



	Blade	SS Comb
Body, sides & back	7 & 7F or 5 & 5F	1 or 2
Head & neck	9	5
Tops of ears	10 or 15	
Stomach	10	
Pads	15 or 30	



### ENGLISH SPRINGER SPANIEL



	Blade	SS Comb
Body, sides, back & tail	7 & 7F or 5 & 5F or 4	1 or 2
Head, neck, ears & throat	10 or 9 & 7F	
Legs & underbody	Scissors	
Stomach	10	
Pads	15 or 30	



### IRISH SETTER & GORDON SETTER



	Blade	SS Comb
Body, sides & back	5 & 5F or 7 & 7F	1 or 2
Head, neck & ears	Head/Neck = 9 or 10, Ears = 10 & 15	
Legs, underbody & tail	Scissors	
Stomach	10	
Pads	15 or 30	



# COAT TYPES

## Double coat

## Combination coat



### COLLIE

(must be completely combed, no mats or undercoat for a plush finish)



	Blade	SS Comb
Body	7F	Longer = 6, 7 or 8, Shave = 2, 3 or 4
Stomach	10	
Pads	15 or 30	



### GOLDEN RETRIEVER



	Blade	SS Comb
Body	7F or 5F or 4	Long trim = 5 or 6, Short trim = 4 or 5
Stomach	10	
Pads	15 or 30	



## All breeds & mixed breeds

### CURLY COAT



	Blade	SS Comb
Sanitary prep	10	
Body & legs	4F	Body = 3 or 4, Legs = 5 or 6
Poodle style face	10 or 15	
Teddy bear style face	10	4 or 5
Tail & stomach	10	
Pads	15 or 30	



### WIREY COAT



	Blade	SS Comb
Sanitary prep	10	
Body	4, 5 or 7	
Legs	Scissors	
Head & ears	9 or 10	
Face & eyebrows	Scissors	
Tail	Scissors	
Stomach	10	
Pads	15 or 30	



### STRAIGHT, SOFT COATED



	Blade	SS Comb
Sanitary prep	10	5 or 6 for fuller look
Puppy cut	30 with 1" SC	2, 3 or 4
Short cut	4F	
Matted strip	5F or 7F	
Head, face & tail	Scissors	
Stomach	10	
Pads	15	

