

COMPETITION

Blades

- Wahl's Competition Series blade sets provide an amazingly smooth, show quality cut. These blades have every characteristic a professional looks for in a USA quality manufactured blade, such as having a hexavalent chrome finish for superior rust and corrosion protection that prolongs blade life.



**#3 Full Coarse Extra
10mm**
02376-116



**#4 Skip Extra Coarse
8mm**
02374-116



**#4F Full Extra Coarse
8mm**
02375-116



**#5 Skip Coarse
6mm**
02371-116



**#5F Full Coarse
6mm**
02372-116



**#7 Skip Medium Coarse
3.8mm**
02367-116



**#7F Full Medium Coarse
4mm**
02368-116



**#8.5 Medium
3mm**
02362-116



**#9 Medium
2mm**
02360-116



**#10 Medium
1.8mm**
02358-116



**#10W Extra Wide
1.8mm**
02377-116



**#15 Medium Fine
1.5mm**
02357-116



**#30 Fine
0.8mm**
02355-116



**#40 Surgical
0.6mm**
02352-116



**#50 Ultra Surgical
0.4mm**
02350-116

COAT TYPES

Curly / Wavy / Fleece coat

BEDLINGTON TERRIER



	Blade	SS Comb
Body	5 & 5F, 7 on shoulder	1 on shoulder, 2 on sides, 5 on topline
Head, Ears & Tail	10, 15 or 30	
Stomach	10	
Pads	15 or 30	



BICHON FRISE



	Blade	SS Comb
Plush cut	30 & 1" SC	4 or 5
Short cut	4 & 4F	3 or 4
Stomach	10	
Pads	15 or 30	



BOUVIER DES FLANDRES



	Blade	SS Comb
Body	30 & 1" SC	6 or 7
Legs, underbody & face	Scissors	Skim with 7 or 8
Matted strip	7 F, 5F or 4F	
Cheeks & throat	Cheeks Natural, 4F on throat	
Ears	10 or 15	
Stomach	10	
Pads	15 or 30	



KERRY BLUE TERRIER



	Blade	SS Comb
Short cut	4 & 4F	3 or 4
Body, sides, back & tail	30 & 1" SC	3, 4 or 5
Neck & ears	10 or 15	
Head	8.5	1
Stomach	10	
Pads	15 or 30	



POODLE



	Blade	SS Comb
Kennel Trim		
Face, feet & base of tail	10 or 15 or 30	
Body & legs	7F, 5F or 4F	2, 3 or 4
Top knot & tail piece	Scissor	
Stomach	10	



POODLE

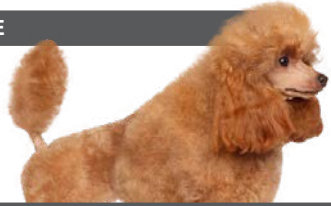


	Blade	SS Comb
Lamb Trim		
Face, feet & base of tail	10 or 15 or 30	
Body	5F or 4F	3 or 4
Legs	Scissor	8
Top knot & tail piece	Scissor	
Stomach	10	





POODLE



Summer Trim	Blade	SS Comb
Face, feet & base of tail	10 or 15 or 30	
Body & legs	7F or 5F	1 or 2
Pompoms, top knot & tail pom	Scissor	
Stomach	10	



POODLE



Dutch Trim	Blade	SS Comb
Face, feet & tail	10 or 15 or 30	
Body pattern	10 or 15	
Body	30 & 1" SC	
Top knot, tail piece & body finish	Scissor	
Stomach	10	



PORTUGUESE WATER DOG



	Blade	SS Comb
Body	30 & 1" SC	4 or 5
Short cut	4 & 4F	3 or 4
Matted strip	7F or 5F	
Head & tail	Tail = 7F, 3/4 length scissor, Head = Skim with A or 0	
Stomach	10	
Pads	15 or 30	



SOFT COATED WHEATON TERRIER



	Blade	SS Comb
Body	30 & 1" SC	5 or 6
Short cut	4 & 4F	4 or 5
Head & tail	Scissors	same as body on topside, skim with 7 or 8
Legs & underbody	Scissors	
Ears	7F or 9	
Stomach	10	
Pads	15 or 30	



YORKSHIRE TERRIER



	Blade	SS Comb
Puppy cut	30 & 1" SC	5 or 6
Short cut	4, 4F or 7F	3 or 4
Matted strip	7F or 5F	Skim with 5 or 6
Face & head	Scissors	
Ears	10 or 15	
Stomach	10	
Pads	15 or 30	



COAT TYPES

Wire coat

AIREDALE TERRIER



	Blade	SS Comb
Body	7, 5 or 4	2
Head & Neck	9 or 7F	1
Ears	10 or 15	
Tail	5 or 4	1
Stomach	10	
Pads	15 or 30	



CAIRN TERRIER



	Blade	SS Comb
Long cut	30 & 3/4" SC	5 or 6
Short cut	4	2, 3 or 4
Head & Tail	Scissors	
Matted strip	5	
Ears & Stomach	10 (15 on ear tips)	
Pads	15 or 30	



DANDIE DINMONT TERRIER



	Blade	SS Comb
Body, sides & back	4	2 or 3
Head, tail & feet	Scissors	
Legs & underbody	Scissors	Skim with 5 or 6
Tops of ears	10 or 15	
Stomach	10	
Pads	15 or 30	



IRISH TERRIER & FOX TERRIER



	Blade	SS Comb
Body, sides, back & tail	5 or 7F	1 or 2
Head, neck & ears	Head = 7F, Neck = 10 or 9	
Stomach		
Pads	10 15 or 30	



LAKELAND TERRIER



	Blade	SS Comb
Body, sides & back	7F or 5F or 4	5 or 4
Head	8.5 or 7F	
Neck & ears	10 or 9 or 7F	
Tail	4 or 5	
Stomach	10	
Pads	15 or 30	





SCHNAUZER



	Blade	SS Comb
Body, back & sides	9 or 7F or 5	
Legs & underbody	Scissors	Skim with 5 or 6
Head, ears & cheeks	10, Head & Neck = 7F, Ears = 15	
Matted strip	7F & 5F	
Stomach	10	
Pads	15 or 30	



SCOTTISH TERRIER



	Blade	SS Comb
Body, back & side of face	5 or 4, Face = 7F	2 or 3
Ears & neck	10 or 15, Neck = 7F	
Head	8.5 or 7F	
Tail	Scissors	Same as body
Stomach	10	
Pads	15 or 30	



SEALYHAM



	Blade	SS Comb
Body, back & side of face	5, 4 or 7	2
Ears & neck	10	
Head	8.5 or 7F	
Tail	5, same as body	
Stomach	10	
Pads	15 or 30	



WELSH TERRIER



	Blade	SS Comb
Body, back, sides & tail	4, 5 or 7F	2SC
Head, ears & neck	7F or 10	
Stomach	10	
Pads	15 or 30	



WEST HIGHLAND TERRIER



	Blade	SS Comb
Body, back & sides	4 or 5, very short = 7F	
Head, tail & underbody	Scissors	
Ear tips	10, 15 or 30	
Stomach	10	
Pads	15 or 30	



COAT TYPES

Long coat

AFGHAN HOUND



	Blade	SS Comb
Matted Strip	7F	
Stomach	10	Puppy cut look = 6, 7 or 8
Pads	15 or 30	



BRIARD



	Blade	SS Comb
Puppy cut	1" SC	6, 7 or 8
Legs, underbody & face	Scissors or 30 & 11/2" SC	Skim with 7 or 8
Matted strip	7.5 or 4	
Stomach	10	
Pads	15 or 30	



BEARDED COLLIE



	Blade	SS Comb
Puppy cut	30 & 11/4" SC	6, 7 or 8
Matted strip	7F or 5F	
Stomach	10	
Pads	15 or 30	



LHASA APSO & MALTESE



	Blade	SS Comb
Puppy cut	30 & 1" SC	1 or 2
Short cut	5 & 5F or 4 & 4F	
Matted strip	7F or 5F	
Top of head	4F or 5F	
Face & tail	Scissors	
Stomach	10	





OLD ENGLISH SHEEPDOG



	Blade	SS Comb
Puppy cut	30 & 11/4" SC	6, 7, 8 or 5
Short cut	4F	3 or 4
Head & face	Scissors	4 or 5
Matted strip	7F or 5F	
Stomach	10	
Pads	15 or 30	



SHIH TZU



	Blade	SS Comb
Puppy cut	30 & 1" SC	3, 4 or 5
Short cut	4 & 4F	2, 3 or 4
Head, tail & ears	Scissors	Skim head with 5 or 6, style dependant
Matted strip	7F or 5F or 4	
Stomach	10	
Pads	15 or 30	



SILKY TERRIER



	Blade	SS Comb
Puppy cut	30 & 3/4" SC	2, 3 or 4
Short cut	4 & 4F	
Head & underbody	Scissors	
Ears	30	
Matted strip	7F or 5F	
Stomach	10	
Pads	15 or 30	

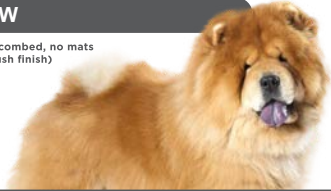


COAT TYPES

Heavy coat

CHOW CHOW

(must be completely combed, no mats or undercoat for a plush finish)



	Blade	SS Comb
Body	7	Puppy cut look = 6, 7 or 8, Shave = 8
Stomach	10	Skim with 7 or 8
Pads	15 or 30	



GREAT PYRENEES



	Blade	SS Comb
Matted strip	7 or 5	
Stomach	10	
Pads	15 or 30	



KEESHOND



	Blade	SS Comb
Body	7F or 5F or 4	Shorter all over = 5 or 6
Stomach	10	
Pads	15 or 30	



NEWFOUNDLAND



	Blade	SS Comb
Matted strip	7 or 5	
Stomach	10	
Pads	15 or 30	





PEKINGESE



	Blade	SS Comb
Short cut	7F, 5 & 5F or 4 & 4F	2, 3 or 4
Stomach	10	



SAMOYED



	Blade	SS Comb
Matted strip	7F or 5F	
Tail	Scissor	
Stomach	10	
Pads	15 or 30	



SHETLAND SHEEPDOG



	Blade	SS Comb
Matted strip	7F or 5F	
Tail	Scissor	
Stomach	10	
Pads	15 or 30	



COAT TYPES

Silky coat



COCKER SPANIEL



	Blade	SS Comb
Body	7 & 7F or 5 & 5F	2 or 1
Face, ears, throat & head	10, 15 or 7F	
Stomach	10	
Pads	15 or 30	



ENGLISH COCKER SPANIEL



	Blade	SS Comb
Body, sides & back	7 or 7F	1
Front of forelegs	7 or 7F	1
Head, neck, ears & face	10, 15 or 7F	
Stomach	10	
Pads	15 or 30	



ENGLISH SETTER



	Blade	SS Comb
Body, sides & back	7 & 7F or 5 & 5F	1 or 2
Head & neck	9	5
Tops of ears	10 or 15	
Stomach	10	
Pads	15 or 30	



ENGLISH SPRINGER SPANIEL



	Blade	SS Comb
Body, sides, back & tail	7 & 7F or 5 & 5F or 4	1 or 2
Head, neck, ears & throat	10 or 9 & 7F	
Legs & underbody	Scissors	
Stomach	10	
Pads	15 or 30	



IRISH SETTER & GORDON SETTER



	Blade	SS Comb
Body, sides & back	5 & 5F or 7 & 7F	1 or 2
Head, neck & ears	Head/Neck = 9 or 10, Ears = 10 & 15	
Legs, underbody & tail	Scissors	
Stomach	10	
Pads	15 or 30	



COAT TYPES

Double coat

Combination coat



COLLIE

(must be completely combed, no mats or undercoat for a plush finish)



	Blade	SS Comb
Body	7F	Longer = 6, 7 or 8, Shave = 2, 3 or 4
Stomach	10	
Pads	15 or 30	



GOLDEN RETRIEVER



	Blade	SS Comb
Body	7F or 5F or 4	Long trim = 5 or 6, Short trim = 4 or 5
Stomach	10	
Pads	15 or 30	



All breeds & mixed breeds

CURLY COAT



	Blade	SS Comb
Sanitary prep	10	
Body & legs	4F	Body = 3 or 4, Legs = 5 or 6
Poodle style face	10 or 15	
Teddy bear style face	10	4 or 5
Tail & stomach	10	
Pads	15 or 30	



WIREY COAT



	Blade	SS Comb
Sanitary prep	10	
Body	4, 5 or 7	
Legs	Scissors	
Head & ears	9 or 10	
Face & eyebrows	Scissors	
Tail	Scissors	
Stomach	10	
Pads	15 or 30	



STRAIGHT, SOFT COATED



	Blade	SS Comb
Sanitary prep	10	5 or 6 for fuller look
Puppy cut	30 with 1" SC	2, 3 or 4
Short cut	4F	
Matted strip	5F or 7F	
Head, face & tail	Scissors	
Stomach	10	
Pads	15	

